



JCM Industries, Inc.

**Fittings & Fabrications
for Repair - Connection - Branching
All Types and Sizes of Pipe**

JCM Industries, Inc.
P.O. Box 1220 - Nash, TX 75569-1220
Office: 903-832-2581, Fax: 903-838-6260
www.jcmindustries.com

Call Toll Free: 800-527-8482
Fax Toll Free: 800-874-9524
Email: sales@jcmindustries.com

JCM Fabricated Weld On Tapping Sleeves and Outlets JCM 416 Weld On Outlets - JCM 417 Weld On Sleeves

Fabricated in compliance with AWWA M11 Manual for Steel Pipe - Fittings Design, Appurtenances

Outlets, partial and complete sleeves are readily available for steel pipe 4" and larger for size on size and reducing outlets. Outlet and partial sleeves are also available for tank and bulkhead use. Various configurations of this design are available. Fittings fabricated of Carbon Steel and All Stainless Steel (304 & 316) are available.

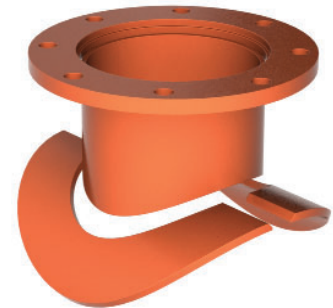
JCM offers a wide variety of standard and custom built sleeves and outlets. Featured are the most popular designs.



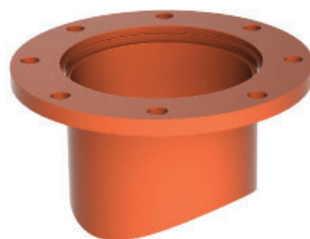
**416 Type 1*
Weld on Outlet**



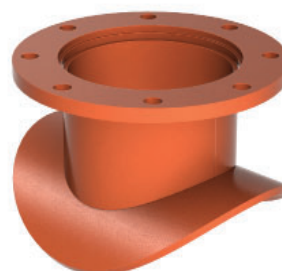
**416 Type 2HW
Split Tee - 3 Piece Weld On Saddle**



**416 Type 2C
(Collar)**



**416 Type 3
Flanged Nozzle
Weld On Outlet**



**416 Type 4*
Hat Flange
Weld On Outlet**

*Not available M11 Compliant

JCM Fabricated Weld On Tapping Sleeves and Outlets

Fabricated in compliance with AWWA M11 Manual for Steel Pipe - Fittings Design, Appurtenances



**417 Type 1
Split Tee
Weld On Tapping Sleeve**



**417 Type 2
Split Tee
3 Piece Weld On Sleeve**

416 and 417 Weld On Tapping Sleeves and Outlets

Nominal Pipe Size (IN)	Catalog Number (Pipe O.D.)	Outlet Size
4	0450	X3 X4
6	0663	X3 X4 X6
8	0863	X3 X4 X6 X8
10	1075	X3 X4 X6 X8 X10
12	1275	X3 X4 X6 X8 X10 X12

Sleeves & outlets are fabricated to the exact O.D. of the pipe. Furnish fitting "Type" and pipe O.D.
 Weld On AWWA fittings are supplied with test outlet unless otherwise requested. Standard flange furnished is ANSI/AWWA C207 Class D, ANSI 150lb. drilling, recessed for tapping valve MSS-SP60.
 Weld On fittings are priced on application. Other configurations and designs available. Contact JCM Sales Team
 1-800-527-8482, 903-832-2581
 sales@jcmindustries.com

Available Upon Request

- ANSI Flanges, Weld Neck Flanges and others
- Outlets Beveled for Welding
- Crotch-Plate (Wye Branch Design)
- All Stainless Steel Fabrications (304, 316)
- Test Ports
- Custom Pipe Diameters
- Other configurations and designs available

MATERIAL SPECIFICATIONS

Body: Carbon steel per ASTM A36, A516 GR70 or equal. Optional 304 or 316 Stainless Steel.

Flange: AWWA C207 Class D, ANSI 150 lb. Drilling, recessed for tapping valve MSS-SP60. Other Flanges Available Upon Request.

Finish: Heavy coat of corrosion resistant shop coat primer. Optional Fusion Epoxy Coating available. ANSI/NSF Standard 61, Annex G and ANSI/NSF 372 Certified.

How To Order:

1. Determine nominal pipe O.D. and outlet size.
2. Determine sleeve type required.
3. Determine special coatings required.
4. Specify sleeve "type", pipe O.D. and outlet size.s

Example: For Steel Pipe with 8.63 O.D. with 6" flanged outlet, full sleeve style, order: 417-0863x6 Type 1

**LARGER PIPE SIZES AND
OUTLETS AVAILABLE
CONTACT JCM INDUSTRIES
Call: 1-800-527-8482
Email: sales@jcmindustries.com**