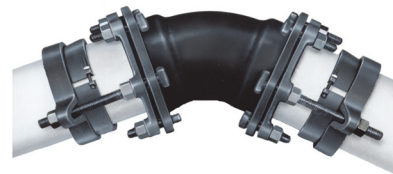


## JCM 610 Sur-Grip Fitting Restrainer

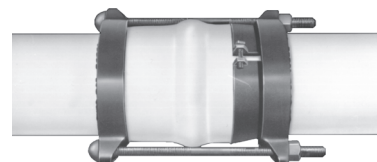
4" - 12" for use with C-900 PVC, Ductile Iron Pipe, DIP HDPE

4" - 8" for use on IPS PVC, IPS HDPE

Anchors IPS PVC, C-900 PVC Pipe and Ductile Iron Pipe to mechanical joint and other type fittings provided with anchor lugs.



PIPE SIZE		CATALOG NUMBER	SERRATED COMPRESSION RING BODY	T-HEAD BOLTS		APPR. WT.EA. (LBS.)
NOM.	O. D.		WIDTH	SIZE	QTY	
4	4.50	610-0450	2-1/2"	3/4 X 9-1/2	2	12
4	4.80	610-0480	2-1/2"	3/4 X 9-1/2	2	12
6	6.63	610-0663	2-1/2"	3/4 X 9-1/2	2	15
6	6.90	610-0690	2-1/2"	3/4 X 9-1/2	2	15
8	8.63	610-0863	2-3/4"	3/4 X 9-1/2	2	22
8	9.05	610-0905	2-3/4"	3/4 X 9-1/2	2	22
10	11.10	610-1110	2-3/4"	3/4 X 9-1/2	4	31
12	13.20	610-1320	2-3/4"	3/4 X 9-1/2	4	41

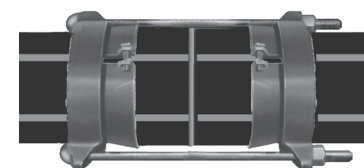


## JCM 620 Sur-Grip Bell Joint/Fuse Joint Restrainer

4" - 12" for use with C-900 PVC, Ductile Iron Pipe, DIP HDPE

4" - 8" for use on IPS PVC, IPS HDPE

Anchors IPS PVC, C-900 PVC Pipe and Ductile Iron Pipe over the bell, flexible couplings and other low profile joints.



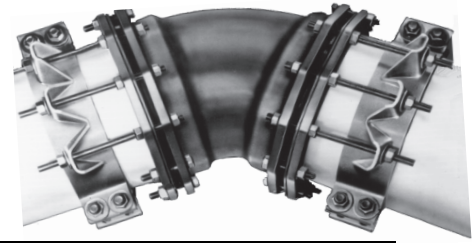
PIPE SIZE		CATALOG NUMBER	SERRATED COMPRESSION RING BODY	COMPRESSION FOLLOWER RING		BOLTS		APPR. WT. EA. (LBS.)
NOM.	O. D.		WIDTH	WIDTH	QTY.	SIZE	QTY	
4	4.50	620-0450	2-1/2"	1-3/8"	2	3/4 X 12	2	16
4	4.80	620-0480	2-1/2"	1-3/8"	2	3/4 X 12	2	16
6	6.63	620-0663	2-1/2"	1-1/2"	2	3/4 X 12	2	21
6	6.90	620-0690	2-1/2"	1-1/2"	2	3/4 X 12	2	21
8	8.63	620-0863	2-3/4"	1-3/4"	2	3/4 X 14	2	32
8	9.05	620-0905	2-3/4"	1-3/4"	2	3/4 X 14	2	32
10	11.10	620-1110	2-3/4"	1-3/4"	2	3/4 X 18-1/2	4	49
12	13.20	620-1320	2-3/4"	1-3/4"	2	3/4 X 18-1/2	4	63

JCM 610 and 620 Sur-Grip Restrainers are rated for 235 PSI on DR-18 PVC Pipe, and are equal to the pipe rating on other classes. JCM 610 and 620 Sur-Grip Restrainers are rated for 350 PSI on Ductile Iron Pipe offering a 2:1 safety factor.

## JCM 610 Sur-Grip Restrainer

### 14" - 30" for use with C-905 PVC Pipe, DIP HDPE

Anchors PVC Pipe to Mechanical Joint and other types of fittings provided with anchor lugs.



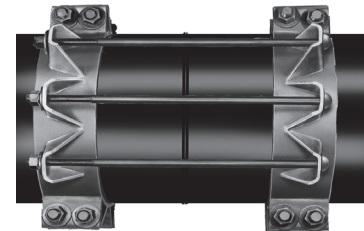
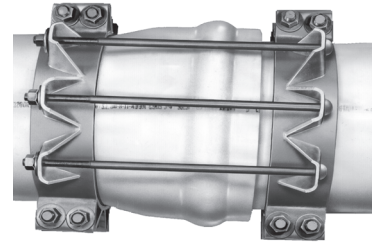
PIPE SIZE		CATALOG NUMBER	BODY WIDTH	RESTRAINING RODS		BOLTS		APPR. WT. EA. (LBS.)
NOM.	O. D.			SIZE	QTY.	SIZE	QTY.	
14	15.30	610-1530	5"	3/4 X 14	6	1 X 9	4	60
16	17.40	610-1740	5"	3/4 X 14	6	1 X 9	4	63
18	19.50	610-1950	5"	3/4 X 14	8	1 X 9	4	73
20	21.60	610-2160	7"	3/4 X 16	8	1 X 9	6	120
24	25.80	610-2580	7"	3/4 X 16	12	1 X 9	6	150
30	32.00	610-3200	10"	1 X 18	14	1 X 9	8	330

## JCM 611 Sur-Grip PVC Fitting Restrainer

### 14" - 30" for use with C-905 PVC Fittings and Pipe

Anchors Long Bell PVC Gasketed Fittings to C-905 PVC Pipe. JCM 611 PVC Fitting Restrainers are Priced on Application. For price and availability, provide the O.D., manufacturer and SDR of the PVC fitting.

PIPE SIZE	BASE CATALOG NUMBER	-	PROVIDE O.D. OF PVC FITTING
14	611-1530	-	x x x x
16	611-1740	-	x x x x
18	611-1950	-	x x x x
20	611-2160	-	x x x x
24	611-2580	-	x x x x
30	611-3200	-	x x x x



## JCM 621 Sur-Grip Bell Joint Restrainer

### 14" - 30" for use with C-905 PVC Pipe, DIP HDPE

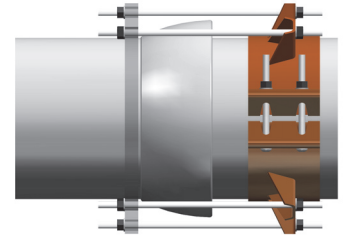
Anchors over the bell-spigot connection or suspect fused joints, the JCM 621 prevents joint separation on pressure pipe.

PIPE SIZE		CATALOG NUMBER	BODY WIDTH	RESTRAINING RODS		BOLTS.		APPR. WT. EA. (LBS.)
NOM.	O. D.			SIZE	QTY.	SIZE	QTY.	
14	15.30	621-1530	5"	3/4 X 26	6	1 X 9	8	113
16	17.40	621-1740	5"	3/4 X 26	6	1 X 9	8	120
18	19.50	621-1950	5"	3/4 X 26	8	1 X 9	8	137
20	21.60	621-2160	7"	3/4 X 32	8	1 X 9	12	230
24	25.80	621-2580	7"	3/4 X 32	12	1 X 9	12	280
30	32.00	621-3200	10"	1 X 36	14	1 X 9	16	660

JCM 610, 611 and 621 Sur-Grip Restrainers sizes 14" - 30" are not for use on ductile iron, cast iron, asbestos cement, steel or any other rigid types of pipe. For application recommendations, contact JCM Inside Sales Team at 1-800-527-8482 or 903-832-2581.

## JCM 630 Restrainer for Asbestos Cement Pipe

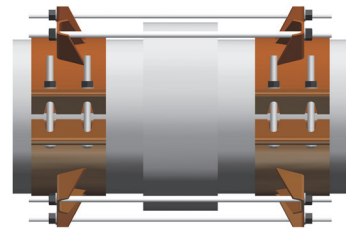
JCM 630 Restrainers have been developed to fill the need to anchor 4 - 16 inch Asbestos Cement pipe. The wide supportive stance around the pipe combined with the split design make these restrainers ideal for retrofitting installations. Necessary excavation of Asbestos Cement Pipe will release the compacted backfill around joint areas exposing the joints to shifting or movement. This disturbance can lead to displaced and leaking gaskets. Hydrants, dead ends, ground subsidence and unstable soils often require restraint other than concrete thrust blocking.



## JCM 630 Fitting Restrainer for Asbestos Cement Pipe

Restrainer for use with fittings, hydrants, flanged coupling adapters, meter and mechanical joints. All thread rods (16" long) nuts and washers are included.

Nominal Pipe Size	Pipe Range O.D.	Fitting Width (IN)	No. Tie Rod	Size Tie Rod	Catalog Number	Options	
						Epoxy Coat Alloy Bolts (E)	Epoxy Coat Stainless Steel Bolts (ESS)
4	4.80 - 5.10	9	2	3/4 x 16	630-0500	(E)	(ESS)
6	7.05 - 7.40	8	2	3/4 x 16	630-0720	(E)	(ESS)
8	9.27 - 9.60	8	2	3/4 x 16	630-0940	(E)	(ESS)
10	11.76 - 12.24	8	4	3/4 x 16	630-1200	(E)	(ESS)
12	14.08 - 14.56	8	4	3/4 x 16	630-1420	(E)	(ESS)
14	16.30 - 16.73	12	6	3/4 x 16	630-1650	(E)	(ESS)
16	18.62 - 19.19	12	6	3/4 x 16	630-1875	(E)	(ESS)



## JCM 631 Coupling Restrainer for Asbestos Cement Pipe

Restrainer for use over A/C coupling, MJ couplings and mechanical couplings. Tie rods (36" long), nuts and washers are included with restrainer

Nominal Pipe Size	Pipe Range O.D.	Fitting Width (IN)	No. Tie Rod	Size Tie Rod	Catalog Number	Options	
						Epoxy Coat Alloy Bolts (E)	Epoxy Coat Stainless Steel Bolts (ESS)
4	4.80 - 5.10	9	2	3/4 x 36	631-0500	(E)	(ESS)
6	7.05 - 7.40	8	2	3/4 x 36	631-0720	(E)	(ESS)
8	9.27 - 9.60	8	2	3/4 x 36	631-0940	(E)	(ESS)
10	11.76 - 12.24	8	4	3/4 x 36	631-1200	(E)	(ESS)
12	14.08 - 14.56	8	4	3/4 x 36	631-1420	(E)	(ESS)
14	16.30 - 16.73	12	6	3/4 x 36	631-1650	(E)	(ESS)
16	18.62 - 19.19	12	6	3/4 x 36	631-1875	(E)	(ESS)

For optional Epoxy Coating add (E) to end of Catalog Number.

For optional Epoxy Coating and stainless steel bolts add (ESS) to end of Catalog Number.

## Material Specifications

- Restrainer Body: Pressure Vessel Quality Steel ASTM A285 Grade C or equal.
- Bolts and Nuts: Corrosion resistant high strength, low alloy AWWA C-111, ANSI 21.11. Optional stainless steel, 18-8 Type 304.
- Finish: Standard Shop Coat - heavy coating of corrosion inhibiting metal primer. Optional Fusion applied Epoxy Coating ANSI/AWWA C-213.