

JCM INDUSTRIES

P. O. Box 1220, Nash, TX 75569-1220

Phone 800-527-8482 or 903-832-2581

Fax 800-874-9524 or 903-838-6260

www.icmindustries.com

Typical Specification

JCM 465 Stainless Steel Tapping Sleeve with Carbon Steel MJ Outlet

Tapping Sleeve shall be of the high strength type with a body made of corrosion resistant, 304 stainless steel, which conforms to and reinforces the pipe. The sleeve shall have a wide gasket of Nitrile Butadiene Rubber (NBR, Buna-N) per ASTM D2000 with hydromechanical activated lip, captured in a groove around the outlet; 18-8 Type 304 stainless steel hardware and nuts. Stainless steel tapping sleeve shall be furnished with a 304 stainless steel test plug in the test outlet. Sleeve shall be fully passivated to return the stainless steel to its highest corrosion resistance.

Mechanical Joint Outlet shall meet the ANSI 21.11/AWWA C111 Standard for Mechanical Joint Dimensions. Outlet shall be furnished with load bearing alignment set pins to prevent movement of the tapping assembly before or during the tapping process. Coated for corrosion resistance.

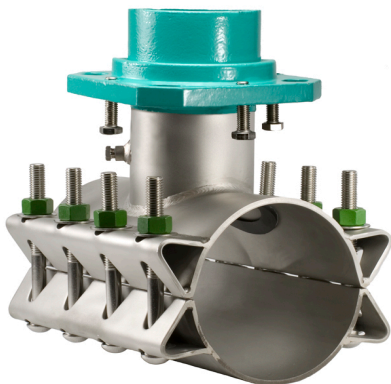
For outlet sizes 14" and larger, the gasket groove must be consistently positioned about throat of tapping waterway. Inside diameter of the gasket groove must be set back a minimum of 1" from the waterway to allow dispersal of forces generated by gasket compression. Gasket grooves machined in a circle and formed to an elliptical shape will not be an accepted equal.

Tapping Sleeves shall be JCM 465 or approved equal.

*Higher test and working pressure ratings available upon request, contact JCM Industries.

JCM 400 Series Tapping Sleeves are ANSI/NSF Standard 61, Annex G & ANSI/NSF 372 Certified.

JCM 400 Series Tapping Sleeves meet MSS-SP124 and ANSI/AWWA Standard C223 Fabricated Steel and Stainless Steel Tapping Sleeves.



JCM 465 Tapping Sleeve
Image reflects 6" x 4"

This typical specification, provided by JCM Industries, is a proposed guideline for use by specifying agencies to ensure significant design and material features of this product are included within the agencies' individual specifications.

JCM INDUSTRIES

P. O. Box 1220, Nash, TX 75569-1220

Phone 800-527-8482 or 903-832-2581

Fax 800-874-9524 or 903-838-6260

www.icmindustries.com

Material Specification

JCM 465 Stainless Steel Tapping Sleeve with Carbon Mechanical Joint Outlet

Body: Stainless Steel 18-8 Type 304.

Bolts: Stainless Steel 18-8 Type 304.
Sleeve sizes 14.20 and smaller = 5/8", sizes 14.75 and larger = 3/4"

Outlet: Mechanical Joint Outlet shall meet the ANSI 21.11/AWWA C111 Standard for Mechanical Joint Dimensions. Outlet shall be furnished with load bearing alignment set pins to prevent movement of the tapping assembly before or during the tapping process. Coated for corrosion resistance.

Branch

Outlet: Schedule 10 Stainless Steel Pipe Type 304

Gasket: Nitrile Butadiene Rubber (NBR, Buna-N) per ASTM D2000. Molded virgin rubber with a pressure activated hydro mechanical design. Gasket is bonded into a cavity for internal and external retention. Gasket temperature range -40°F to 212°F (-40°C - 100°C) Gasket suitable for water, salt solutions, mild acids, bases, and sewage.

Service

Rating: 4" – 12"* pipe sizes: 250 PSI working pressure, hydrostatic test pressure of 300 PSI
*12 x 12 w/Stainless Bolts: 200 PSI working pressure, hydrostatic test pressure of 250 PSI
14" – 24" pipe sizes: 200 PSI working pressure, hydrostatic test pressure of 250 PSI

JCM 400 Series Tapping Sleeves are ANSI/NSF Standard 61, Annex G & ANSI/NSF Standard 372 Certified.

JCM 400 Series Tapping Sleeves meet MSS-SP124 and ANSI/AWWA Standard C223 Fabricated Steel and Stainless Steel Tapping Sleeves.



Effective 09.03.19