

JCM Industries, Inc.

Pipe Fittings & Fabrications for Repair - Connection - Branching

JCM 418 Fabricated Threaded Outlet Tapping Sleeve

JCM 438 All Stainless Steel Threaded Outlet Tapping Sleeve

JCM 6438 All 316 Stainless Steel Threaded Outlet Tapping Sleeve

Recommended for service connections, air relief valve connections, taps on larger Asbestos Cement Pipe, Cast Iron, Ductile Iron, PVC, HDPE and Reinforced Concrete Pipe. The heavy duty construction of the 418/438/6438 provides the strong, substantial base required on host pipelines for installation of all types of threaded appurtenances.

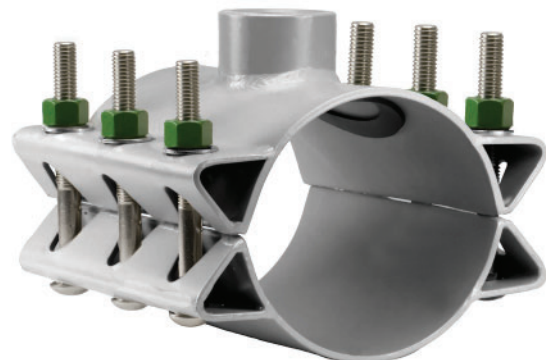
The broad, heavy gasket section and full sleeve support offer much more stability, pipe reinforcement and strength than a common strapped saddle, yet remains competitively priced and easy to install.

The JCM 418 Fabricated Threaded Outlet Tapping Sleeve is constructed of strong carbon steel and is available with base shop coat primer or for more corrosion resistance, a fusion applied epoxy coating can be added.

For harsh, unfriendly environments and/or line contents, the same great design is offered in all 304 (JCM Model 438) or all 316 (JCM Model 6438) options, offering the superior corrosion resistance to chlorines and salt based situations.



**JCM 418 Fabricated Carbon Steel
Threaded Outlet Tapping Sleeve**



**JCM 438 All 304 Stainless Steel
JCM 6438 All 316 Stainless Steel
Threaded Outlet Tapping Sleeve**

JCM 418 Threaded Outlet Tapping Sleeve

For taps and connections on larger pipe, thin wall pipe and pipe requiring extra reinforcement.



The JCM 418 Fabricated Threaded Outlet Tapping Sleeve is especially recommended for service connections, air relief valve connections, taps on larger A/C, Cast Iron, Ductile Iron, PVC and Reinforced Concrete Pipe. The heavy gasket section and full sleeve support of this fitting offer much more stability, pipe reinforcement and strength than a strapped saddle, yet they are competitively priced. Readily available for pipe 4" and larger requiring IPS outlets of 3/4" through 4", these sleeves are furnished with shop coat and alloy bolts. Epoxy coating and stainless steel bolts are available at an additional charge.

HOW TO ORDER

1. Determine O.D. of pipe and outlet size.
2. Check listing to determine catalog number.
3. For sizes not listed, order by pipe O.D. size

Example: For 24" Cast Iron with 25.80 O.D. with 3"IP outlet, order: 418-2580 x 17IP.

For All Stainless Steel see 438 Threaded Outlet Tapping Sleeve

418 FABRICATED THREADED OUTLET TAPPING SLEEVE (IPS Outlet)

NOM. PIPE SIZE (IN.)	SLEEVE O.D. RANGE (IN.)	CATALOG NUMBER X OUTLET SIZE	APPR. WT. EACH (LBS.)	OUTLET SIZE	ORDER CODE IP
				3/4"	06
2	*2.38	418-0238 X --	12	1"	08
	*2.50	418-0250 X --	12	1-1/4"	10
3	3.50	418-0350 X --	18	1-1/2"	12
	3.96	418-0396 X --	18	2"	14
4	4.50	418-0450 X --	21	2-1/2"	16
	4.80	418-0480 X --	21	3	17
6	6.63	418-0663 X --	23	4	18
	6.90	418-0690 X --	23		
8	8.63	418-0863 X --	31		
	9.05	418-0905 X --	33		
10	10.75	418-1075 X --	38		
	11.10	418-1110 X --	40		
12	12.75	418-1275 X --	48		
	13.20	418-1320 X --	51		
14	14.59 - 15.08	418-1475 X --	54		
	15.23 - 15.80	418-1530 X --	57		
	16.30 - 16.73	418-1650 X --	60		
16	17.33 - 17.87	418-1740 X --	64		
	18.62 - 19.19	418-1875 X --	68		
18	19.41 - 20.01	418-1950 X --	72		
	20.93 - 21.57	418-2130 X --	77		
20	21.51 - 22.15	418-2160 X --	80		
	23.46 - 24.16	418-2400 X --	87		
24	25.71 - 26.41	418-2580 X --	95		
	28.14 - 28.84	418-2834 X --	104		
30	31.62 - 32.22	418-3200 X --	115		
36	38.10 - 38.75	418-3830 X --	139		
42	44.10 - 44.70	418-4450 X --	160		
48	50.40 - 51.00	418-5080 X --	183		
54	56.60 - 57.25	418-5710 X --	205		

* Outlets Available
3/4 - 2" IP/CC

2" CC Not Available



OTHER SIZES AVAILABLE UPON REQUEST.

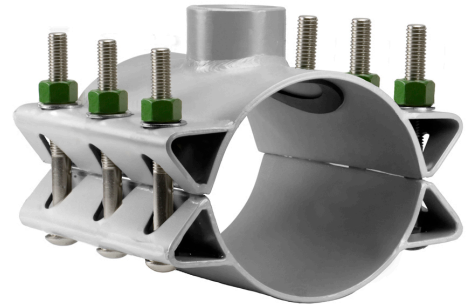
Available Options for JCM 418:

- Epoxy Coated with Stainless Steel Hardware (additional charge).
- With CC Threaded Outlet (additional charge).
- American Iron and Steel/Buy American Compliant upon request.

JCM 438 All Stainless Steel Threaded Outlet Tapping Sleeve

For taps and connections on larger pipe, thin wall pipe and pipe requiring extra reinforcement in corrosive or aggressive conditions.

The JCM 438 All Stainless Steel Threaded Outlet Tapping Sleeve is especially recommended for aggressive or acidic conditions. The heavy gasket section and full sleeve support of this fitting offer much more stability, pipe reinforcement and strength than a strapped saddle, yet they are competitively priced. Readily available for pipe 4" and larger requiring IPS outlets of 3/4" through 4".



HOW TO ORDER

1. Determine O.D. of pipe and outlet size.
2. Check listing to determine order number.
3. For sizes not listed, order by pipe O.D. size

Example: For 24" Cast Iron with 25.80 O.D. with 3"IP outlet, order: 438-2580 x 17IP

438 ALL STAINLESS STEEL THREADED OUTLET TAPPING SLEEVE (IPS Outlet)

NOM. PIPE SIZE (IN.)	SLEEVE O.D. RANGE (IN.)	CATALOG NUMBER X OUTLET SIZE	APPR. WT. EACH (LBS.)
3	3.50	438-0350 X --	19
	3.96	438-0396 X --	19
4	4.50	438-0450 X --	21
	4.80	438-0480 X --	21
6	6.63	438-0663 X --	23
	6.90	438-0690 X --	23
8	8.63	438-0863 X --	31
	9.05	438-0905 X --	33
10	10.75	438-1075 X --	38
	11.10	438-1110 X --	40
12	12.75	438-1275 X --	48
	13.20	438-1320 X --	51
14	14.59 - 15.08	438-1475 X --	54
	15.23 - 15.80	438-1530 X --	57
	16.30 - 16.73	438-1650 X --	60
16	17.33 - 17.87	438-1740 X --	64
	18.62 - 19.19	438-1875 X --	68
18	19.41 - 20.01	438-1950 X --	72
	20.93 - 21.57	438-2130 X --	77
20	21.51 - 22.15	438-2160 X --	80
	23.46 - 24.16	438-2400 X --	87
24	25.71 - 26.41	438-2580 X --	95
	28.14 - 28.84	438-2834 X --	104
30	31.62 - 32.22	438-3200 X --	115
36	38.10 - 38.75	438-3830 X --	139
42	44.10 - 44.70	438-4450 X --	160
48	50.40 - 51.00	438-5080 X --	183
54	56.60 - 57.25	438-5710 X --	205

OUTLET SIZE	ORDER CODE IP
3/4"	06
1"	08
1-1/4"	10
1-1/2"	12
2"	14
2-1/2"	16
3	17
4	18

* Outlets Available
3/4 - 2" IP/CC

2" CC Not Available



OTHER SIZES AVAILABLE UPON REQUEST.

Available Options for JCM 438:

- With CC Threaded Outlet (additional charge).
- American Iron and Steel/Buy American Compliant upon request.
- JCM Model 6438 All Stainless Steel Tapping Sleeve - 316 Stainless Steel available.



Pipe Outside Diameter Guide

IMPORTANT: This Pipe O.D. Guide is furnished for your convenience and is based on the latest pipe standards and information supplied by pipe manufacturers. Due to occasional changes and variances in outside diameters, the pipe O.D. should always be verified before ordering fittings.

SMALL DIAMETER PIPE SIZES

NOMINAL PIPE SIZE (INCHES)	1/2	3/4	1	1-1/4	1-1/2	2	2-1/2
COPPER TUBING	.63	.88	1.13	1.38	1.63	2.13	2.63
STEEL & PLASTIC PIPE	.84	1.05	1.32	1.66	1.90	2.38	2.88

STANDARD PRESSURE PIPE SIZES

NOMINAL PIPE SIZE (INCHES)	3	4	5	6	8	10	12	14	15	16	18	20	24	30
COPPER TUBING	3.13	4.13	5.13	6.13										
STEEL & PLASTIC PIPE (SDR 26,21 & SCHEDULE)	3.50	4.50	5.56	6.63	8.63	10.75	12.75	14.00		16.00	18.00	20.00	24.00	30.00
PLASTIC IRRIGATION PIPE (PIP)		4.13		6.14	8.16	10.20	12.24		15.30		18.70	22.05	24.80	
PLASTIC SEWER PIPE (SDR 35)		4.22		6.28	8.40	10.50	12.50		15.30		18.70		24.80	
PLASTIC (PVC) AWWA C-900/C-905/C-909		4.80		6.90	9.05	11.10	13.20	15.30		17.40	19.50	21.60	25.80	
POLYETHYLENE PIPE (IPS SIZE)	3.50	4.50		6.63	8.63	10.75	12.75	14.00		16.00	18.00	20.00	24.00	30.00
POLYETHYLENE PIPE (DIP SIZE)		4.80		6.90	9.05	11.10	13.20	15.30		17.40	19.50	21.60	25.80	32.00

DUCTILE IRON PIPE	3.96	4.80		6.90	9.05	11.10	13.20	15.30		17.40	19.50	21.60	25.80	32.00	
CAST IRON	CLASS 100 - 250 AWWA	3.96	4.80		6.90	9.05	11.10	13.20	15.30		17.40	19.50	21.60	25.80	32.00
	CLASS A AWWA PIT CAST	3.80	4.80		6.90	9.05	11.10	13.20	15.30		17.40	19.50	21.60	25.80	31.74
	CLASS B AWWA PIT CAST	3.96	5.00		7.10	9.05	11.10	13.20	15.30		17.40	19.50	21.60	25.80	32.00
	CLASS C - D AWWA PIT CAST	3.96	5.00		7.10	9.30	11.40	13.50	15.65		17.80	19.92	22.06	26.32	

ABESTOS CEMENT PIPE	Class 100	MACHINED END	3.74	4.64		6.91	9.11	11.24*	13.44*	15.07		17.15	19.90	22.12	26.48	33.12	
		FLINTITE ROUGH BARREL	3.94	4.90		7.13	9.33	11.30	13.42	15.45		17.60					
		FLUID-TITE ROUGH BARREL	3.93	5.05		7.16	9.32	11.46	13.70	15.36		17.50	20.44	22.50	27.17		
		PERMAFLEX ROUGH BARREL		4.84		7.15	9.35	11.47	13.74	15.55		17.55	20.50	22.70	27.15		
		RING-TITE ROUGH BARREL	3.95	4.92		7.19	9.39	11.47	13.74	15.51		17.65	20.44	22.68	27.12	33.80	
		MIN. STD. ROUGH BARREL		4.79		7.05	9.22	11.25	13.37	15.36		17.50					
		MAX. STD. ROUGH BARREL		5.26		7.40	9.57	11.77	14.04	15.80		17.94					
	Class 150	MACHINED END	3.84	4.81		6.91	9.11	11.66	13.92	16.22		18.46	20.94	23.28	27.96	35.00	
		FLINTITE ROUGH BARREL	4.40	5.06		7.13	9.33	11.88	14.14	16.48		18.72					
		FLUID-TITE ROUGH BARREL	4.03	5.14		7.12	9.32	11.85	14.11	16.41		18.65	21.20	23.54	28.22		
		PERMAFLEX ROUGH BARREL		5.00		7.20	9.40	11.92	14.20	16.50		18.75	21.30	23.64	28.32		
		RING-TITE ROUGH BARREL	4.13	5.07		7.17	9.37	11.92	14.18	16.48		18.72	21.30	23.64	28.32	35.42	
		MIN. STD. ROUGH BARREL		4.97		7.07	9.27	11.82	14.08	16.38		18.62					
		MAX. STD. ROUGH BARREL		5.32		7.37	9.62	12.12	14.38	16.73		18.97					
	Class 200	MACHINED END	3.84	4.81		6.91	9.11	11.66	13.92	16.22		18.46	22.18	24.66	29.62	37.06	
		FLINTITE ROUGH BARREL	4.17	5.32		7.26	9.44	11.88	14.14	16.53		18.84					
		FLUID-TITE ROUGH BARREL	4.18	5.32		7.36	9.46	11.88	14.11	16.44		18.74					
		PERMAFLEX ROUGH BARREL		5.32		7.25	9.50	11.95	14.20	16.55		18.90	22.54	25.02	29.98		
		RING-TITE ROUGH BARREL	4.17	5.33		7.32	9.50	11.92	14.18	16.59		18.90	22.54	25.02	29.98	37.48	
		MIN. STD. ROUGH BARREL		5.22		7.26	9.39	11.77	14.03	16.44		18.74					
		MAX. STD. ROUGH BARREL		5.57		7.60	9.79	12.12	14.38	16.88		19.19					
	NOMINAL PIPE SIZE (INCHES)		3	4	5	6	8	10	12	14	15	16	18	20	24	30	

* Flintite ME is 10.89 for 10" and 12.99 for 12" sizes.



JCM INDUSTRIES, INC.
 P.O. Box 1220 • Nash, Texas 75569-1220
 Call Toll Free 800-527-8482, Fax Toll Free 800-874-9524
 Outside U.S. Call 903-832-2581, Outside U.S. Fax 903-838-6260
www.jcmindustries.com

