



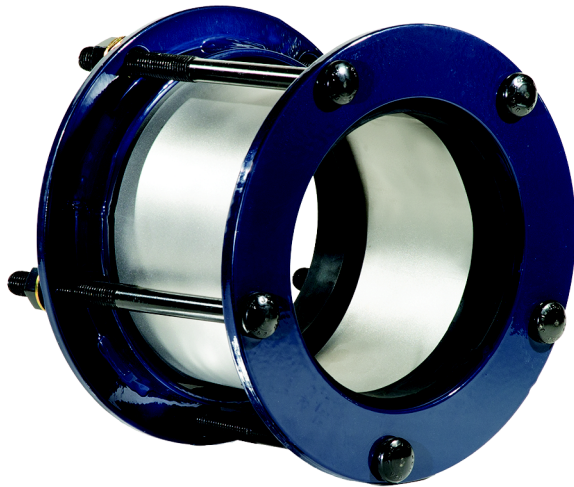
JCM Industries, Inc.

**Fittings & Fabrications
for Repair - Connection - Branching
All Types and Sizes of Pipe**

JCM Industries, Inc.
P.O. Box 1220 - Nash, TX 75569-1220
Office: 903-832-2581, Fax: 903-838-6260
www.jcmindustries.com

Call Toll Free: 800-527-8482
Fax Toll Free: 800-874-9524
Email: sales@jcmindustries.com

JCM 262 FABRICATED STAINLESS STEEL COUPLING



Offers:

**Extraordinary Corrosion Resistance
Ease of Installation
Transitions with simple change of Gasket
American Iron & Steel Compliance Available**

**Corrosion resistance both inside and out with:
304 Stainless Steel Middle Ring
Plastic Coated Carbon Steel End Rings
Electrocoat Bolts and Nuts**

Eases installation by reduction in overall weight with durable and strong stainless steel middle ring material.

Use of alternative type of pipe in repair/replacement is made simple with JCM G212 Transition Gasket System. Discovery of unexpected pipe type is easily overcome with just an economical change of gasket.

The JCM 262 Fabricated Stainless Steel Coupling provides an economical solution to joining two plain end pieces of pipe. Constructed of Carbon Steel End Rings with resilient Fusion Plastic Coating, a 304 Stainless Steel middle ring and alloy hardware, electrocoated with Powercron 590-534, the JCM 262 is prepared for the harshest of elements, corrosive line content - or both!

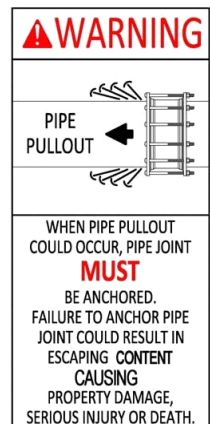
Features built into the design of the JCM 262 include:

Availability - The JCM 262 Fabricated Stainless Steel Coupling is available from JCM on either an emergency or contingency basis.

Composition - the JCM 262 offers the industry standard working range that accommodates the piping industry's +/- tolerances of the types of pipe to be joined.

Restraint systems available upon request.

Note: Standard couplings do not provide for axial pipe movement. In applications in which lateral pipe pullout may occur, pipe restraint must be provided. See fitting manufacturer recommendations for applications on High Density Polyethylene Pipe.





JCM 262 FABRICATED STAINLESS STEEL COUPLING

The JCM 262 Fabricated Stainless Steel Coupling provides an economical solution to joining two plain end pieces of pipe. Constructed of Carbon Steel End Rings with resilient Fusion Plastic Coating, a 304 Stainless Steel middle ring and alloy hardware, electrocoated with Powercron 590-534, the JCM 262 is prepared for the harshest of elements, corrosive line content - or both!

American Iron and Steel Compliance - for AIS Compliant Couplings, contact JCM Industries, Inc. for price and availability.

JCM 262 FABRICATED STAINLESS STEEL COUPLINGS

NOM. PIPE SIZE (IN.)	FROM O.D. RANGE (IN.)	TO O.D. RANGE (IN.)	CATALOG NUMBER	NO. OF BOLTS	EFFECTIVE LENGTH (IN.)	OVERALL LENGTH (IN.)	BOLT SIZE LENGTH (IN.)	APPR. WT. EACH (LBS.)
4	4.50	4.50	262-0450	4	5.63	7.5	5/8 X 9	18
4	4.50	4.00	262-0450-0400	4	5.63	7.5	5/8 X 9	18
4	4.50	4.22	262-0450-0422	4	5.63	7.5	5/8 X 9	18
4	4.80 - 5.10	4.80 - 5.10	262-0480	4	5.63	7.5	5/8 X 9	18
4	4.80 - 5.10	4.00	262-0480-0400	4	5.63	7.5	5/8 X 9	18
4	4.80 - 5.10	4.22	262-0480-0422	4	5.63	7.5	5/8 X 9	18
4	4.80 - 5.10	4.50	262-0480-0450	4	5.63	7.5	5/8 X 9	18
6	6.63	6.63	262-0663	5	5.63	7.5	5/8 X 9	21
6	6.63	6.00	262-0663-0600	5	5.63	7.5	5/8 X 9	21
6	6.63	6.30	262-0663-0630	5	5.63	7.5	5/8 X 9	21
6	6.90 - 7.20	6.90 - 7.20	262-0690	5	5.63	7.5	5/8 X 9	21
6	6.90 - 7.20	6.00	262-0690-0600	5	5.63	7.5	5/8 X 9	21
6	6.90 - 7.20	6.30	262-0690-0630	5	5.63	7.5	5/8 X 9	21
6	6.90 - 7.20	6.63	262-0690-0663	5	5.63	7.5	5/8 X 9	21
8	8.63	8.63	262-0863	6	5.63	7.5	5/8 X 9	28
8	8.63	8.00	262-0863-0800	6	5.63	7.5	5/8 X 9	28
8	8.63	8.40	262-0863-0840	6	5.63	7.5	5/8 X 9	28
8	9.05 - 9.40	9.05 - 9.40	262-0905	6	5.63	7.5	5/8 X 9	28
8	9.05 - 9.40	8.00	262-0905-0800	6	5.63	7.5	5/8 X 9	28
8	9.05 - 9.40	8.40	262-0905-0840	6	5.63	7.5	5/8 X 9	28
8	9.05 - 9.40	8.63	262-0905-0863	6	5.63	7.5	5/8 X 9	28
10	10.75	10.75	262-1075	7	5.63	7.5	5/8 X 9	37
10	10.75	10.50	262-1075-1050	7	5.63	7.5	5/8 X 9	37
10	11.10 - 11.40	11.10 - 11.40	262-1110	7	5.63	7.5	5/8 X 9	37
10	11.10 - 11.40	10.50	262-1110-1050	7	5.63	7.5	5/8 X 9	37
10	11.10 - 11.40	10.75	262-1110-1075	7	5.63	7.5	5/8 X 9	37
12	12.75	12.75	262-1275	8	5.63	7.5	5/8 X 9	44
12	12.75	12.50	262-1275-1250	8	5.63	7.5	5/8 X 9	44
12	13.20 - 13.50	13.20 - 13.50	262-1320	8	5.63	7.5	5/8 X 9	44
12	13.20 - 13.50	12.50	262-1320-1250	8	5.63	7.5	5/8 X 9	44
12	13.20 - 13.50	12.75	262-1320-1275	8	5.63	7.5	5/8 X 9	44

Note: Applications in which pipe may move out of the coupling, proper anchorage of the pipe must be provided.

Custom sizes & lengths available upon request. Contact JCM Industries, Inc.

Purchase orders for the JCM Industries, Inc 262 type coupling signify an agreement between the manufacturer and customer that both parties agree to the JCM test procedure for meeting ANSI/AWWA C219 Standard for Bolted, Sleeve-Type Couplings for Plain-End Pipe. All couplings are pneumatically tested to a minimum of 25 PSI. Additional testing for certification purposes available upon request with additional charge.



JCM 262 OVERSIZED FABRICATED STAINLESS STEEL COUPLING

The JCM 262 Oversized Fabricated Stainless Steel Coupling provides an economical solution for joining old cast iron, larger classes of asbestos cement and other types of oversized pipe. The JCM 262 Coupling uses the popular and economical JCM G212 Transition Gasket System. Making transitions of the same nominal pipe size easy with just the change of gasket. The JCM 262 Oversized Coupling is constructed of same corrosion resistant materials - Carbon Steel End Rings with resilient Fusion Plastic Coating, a 304 Stainless Steel middle ring and alloy hardware, electrocoated with Powercron 590-534, the JCM 262 is prepared for the harshest of elements, corrosive line content - or both!

American Iron and Steel Compliance - for AIS Compliant Couplings, contact JCM Industries, Inc. for price and availability.

JCM 262 OVERSIZED FABRICATED STAINLESS STEEL COUPLINGS

NOM. PIPE SIZE (IN.)	FROM O.D. RANGE (IN.)	TO O.D. RANGE (IN.)	CATALOG NUMBER	NO. OF BOLTS	EFFECTIVE LENGTH (IN.)	OVERALL LENGTH (IN.)	BOLT SIZE LENGTH (IN.)	APPR. WT. EACH (LBS.)
4	5.10 - 5.40	5.10 - 5.40	262-0535	4	5.63	7.5	5/8 X 9	18
4	5.10 - 5.40	4.50	262-0535-0450	4	5.63	7.5	5/8 X 9	18
4	5.10 - 5.40	4.80	262-0535-0480	4	5.63	7.5	5/8 X 9	18
6	7.20 - 7.55	7.20 - 7.55	262-0740	5	5.63	7.5	5/8 X 9	21
6	7.20 - 7.55	6.63	262-0740-0663	5	5.63	7.5	5/8 X 9	21
6	7.20 - 7.55	6.90	262-0740-0690	5	5.63	7.5	5/8 X 9	21
8	9.40 - 9.75	9.40 - 9.75	262-0960	6	5.63	7.5	5/8 X 9	28
8	9.40 - 9.75	8.63	262-0960-0863	6	5.63	7.5	5/8 X 9	28
8	9.40 - 9.75	9.05	262-0960-0905	6	5.63	7.5	5/8 X 9	28
10	11.60 - 12.05	11.60 - 12.05	262-1200	7	5.63	7.5	5/8 X 9	37
10	11.60 - 12.05	10.75	262-1200-1075	7	5.63	7.5	5/8 X 9	37
10	11.60 - 12.05	11.10	262-1200-1110	7	5.63	7.5	5/8 X 9	37
12	13.92 - 14.40	13.92 - 14.40	262-1420	8	5.63	7.5	5/8 X 9	44
12	13.92 - 14.40	12.75	262-1420-1275	8	5.63	7.5	5/8 X 9	44
12	13.92 - 14.40	13.20	262-1420-1320	8	5.63	7.5	5/8 X 9	44

Note: Applications in which pipe may move out of the coupling, proper anchorage of the pipe must be provided.

Custom sizes & lengths available upon request. Contact JCM Industries, Inc.

Purchase orders for the JCM Industries, Inc 262 type coupling signify an agreement between the manufacturer and customer that both parties agree to the JCM test procedure for meeting ANSI/AWWA C219 Standard for Bolted, Sleeve-Type Couplings for Plain-End Pipe. All couplings are pneumatically tested to a minimum of 25 PSI. Additional testing for certification purposes available upon request with additional charge.

Material Specifications:

Coupling Materials: Followers: Steel per ASTM A36, ASTM A516 GR70 or equal. Optional Followers: Ductile Iron, per ASTM A536
Middle Ring: 304 Stainless Steel ASTM A240

Follower Coating: Fusion bonded high density blue plastic, 12 mils minimum thickness, with a dielectric strength of over 12,000 volts. Water absorption less than .20% (less than nylon) prevents undercutting and blistering.

Gaskets: Styrene-Butadiene Rubber (SBR) has good physical properties. Compounded for use with water, salt solutions, mild acids and bases; has excellent abrasion resistance. Per ASTM D-2000. Standard temperature range from -40° to 150°F (-40° to 65°C) constant, maximum intermittent 180°F (82°C). For applications on high temperatures or chemical pipelines, contact JCM Industries Technical Services. The material is not recommended for use on oil, ozone or weather resistant applications. Available Options: EPDM

Hardware: Electro Coated Hardware, Powercron 590-534 black cationic electrocoat, 5/8" Corrosion resistant, high strength low alloy oval neck track head bolts per ASTM A242/ANSI 21.11/AWWA C111 and heavy hex nuts per A563 or equal. Optional Hardware: Stainless Steel 18-8 Type 304 or 316

Working Pressure: Fittings are rated for 150 PSI working pressure when installed per manufacturer's instructions. Inspection of pipe integrity is the responsibility of the end user. For higher working pressure applications, contact JCM Industries.

JCM 200 Series Steel Couplings are ANSI/NSF Standard 61, Annex G and ANSI/NSF 372 Certified.

American Iron and Steel Compliance - for AIS Compliant Couplings, contact JCM Industries, Inc. for price and availability.

JCM 262 FABRICATED STAINLESS STEEL COUPLING

The JCM 262 Fabricated Stainless Steel Coupling incorporates the uniquely simple JCM G212 Transition Gasket system. Using self-centering, extra wide transition gaskets, the JCM G212 eliminates the need for stocking special transition couplings or color coded flanges and gaskets. Change only gaskets to make a transition between Cast Iron, Ductile Iron, Class 150 A/C, DIPS/HDPE, Steel and PVC, IPS/HDPE pipe. Use the same size gasket on both ends to make a straight coupling.



JCM's G212 Transition Coupling Gasket System

Transitions between Cast Iron/Ductile Iron, C900 and DIPS/HDPE to IPS PVC, Steel and IPS/HDPE is completed with just a switch of gasket - or both gaskets to make a straight coupling.

Example:

(1) 262-0690 coupling, change (1) gasket;
create a 262-0690-0663, change the other gasket: create a 262-0663

Fast, simple and economical!

GASKETS FOR JCM 262 FABRICATED STAINLESS STEEL COUPLINGS

NOM. PIPE SIZE (IN.)	FITS COUPLING SLEEVE	GASKET O.D. RANGE (IN.)	FITS TYPES & CLASSES OF PIPE	GASKET NUMBER
4	262-0480	4.74 - 5.10	CI, DI, A/C 150, C-900 PVC IPS PVC, STEEL, HDPE SDR 35 STEEL TUBING	G212-0480
		4.50		G212-0480-0450
		4.22		G212-0480-0422
		4.00		G212-0480-0400
6	262-0690	6.84 - 7.26	CI, DI, A/C 150, C-900 PVC IPS PVC, STEEL, HDPE SDR 35 STEEL TUBING	G212-0690
		6.63		G212-0690-0663
		6.30		G212-0690-0630
		6.00		G212-0690-0600
8	262-0905	8.99 - 9.42	CI, DI, A/C 150, C-900 PVC IPS PVC, STEEL, HDPE SDR 35 STEEL TUBING	G212-0905
		8.63		G212-0905-0863
		8.40		G212-0905-0840
		8.00		G212-0905-0800
10	262-1110	11.04 - 11.40	CI, DI, C-900 PVC IPS PVC, STEEL, HDPE SDR 35	G212-1110
		10.75		G212-1110-1075
		10.50		G212-1110-1050
12	262-1320	13.14 - 13.50	CI, DI, C-900 PVC IPS PVC, STEEL, HDPE SDR 35	G212-1320
		12.75		G212-1320-1275
		12.50		G212-1320-1250

GASKETS FOR JCM 262 OVERSIZED FABRICATED STAINLESS STEEL COUPLINGS

NOM. PIPE SIZE (IN.)	FITS COUPLING SLEEVE	GASKET O.D. RANGE (IN.)	FITS TYPES & CLASSES OF PIPE	GASKET NUMBER
4	262-0535	5.06 - 5.40	A/C CI, DI, A/C 150, C-900 PVC IPS PVC, STEEL, HDPE	G212-0535
		4.80 - 5.10		G212-0535-0480
		4.50		G212-0535-0450
6	262-0740	7.17 - 7.55	A/C CI, DI, A/C 150, C-900 PVC IPS PVC, STEEL, HDPE	G212-0740
		6.90 - 7.16		G212-0740-0690
		6.63		G212-0740-0663
8	262-0960	9.32 - 9.75	A/C CI, DI, A/C 150, C-900 PVC IPS PVC, STEEL, HDPE	G212-0967
		9.05 - 9.30		G212-0967-0905
		8.63		G212-0967-0863
10	262-1200	11.60 - 12.05	A/C CI, DI, C-900 PVC IPS PVC, STEEL, HDPE	G212-1200
		11.04 - 11.30		G212-1200-1110
		10.75		G212-1200-1075
12	262-1420	13.92 - 14.40	A/C CI, DI, C-900 PVC IPS PVC, STEEL, HDPE	G212-1420
		13.14 - 13.50		G212-1420-1320
		12.75		G212-1420-1275

JCM Industries, Inc.

P.O. Box 1220, Nash, TX 75569-1220

1-800-527-8482 or 903-832-2581