

JCM INDUSTRIES

P. O. Box 1220, Nash, TX 75569-1220

Phone 800-527-8482 or 903-832-2581

Fax 800-874-9524 or 903-838-6260

www.jcmindustries.com

Specification

JCM 159 Abandoned Corporation Cap Sleeve Type 1 All Stainless Steel with Full Circumferential Gasket

Repair sleeve shall be fabricated from 304 Stainless Steel or its equivalent. They shall have a pass through bolt design and provide 360° seal around the pipe. Sleeve shall be fully passivated to return the stainless steel to its highest corrosion resistance. To provide the proper strength, support and safety factor for the valve, drilling machine operation and load forces, the body construction shall be a minimum of:

Outlet Half (load bearing half):

Sleeve Sizes 0450 through 1392

12 gauge Stainless Steel

Sleeve Sizes 1420 and larger

10 gauge Stainless Steel

Back Half (conforming half):

14 gauge Stainless Steel

Length:

15"

For proper strength, support the neck outlet construction shall be a minimum of Schedule 10 Stainless Steel pipe. The cap shall have a 3/4" test port for relief.

The lugs shall have a pass-through bolt design, to avoid alignment problems and allow tightening from either side of the pipe. Bolts shall not be integrally welded to the sleeve. Bolting lug shall be triangular design with a maximum of 3" bolt center spacing. Bolting hardware shall be a minimum of 304 Stainless Steel. The bolts shall be track head type and furnished with permanently lubricated heavy-hex nuts and stainless washers.

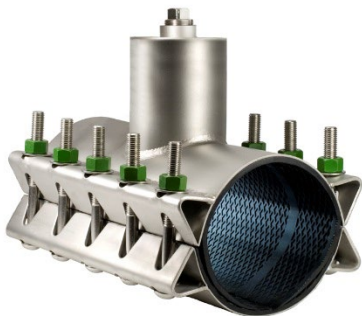
The full circumferential gasket shall be molded of synthetic rubber compounded for use with water salt solutions, mild acids, bases and sewage. The gasket shall have a gridded surface, be a full 1/4" thick with 304 stainless steel bridge plates molded flush into the gasket and have a raised hydromechanical outlet seal to seal against line surges and water hammer.

Sleeve pressure rating:

250 PSI working pressure, hydrostatic test pressure of 300 PSI. For higher pressures, contact JCM Industries.

Sleeves provided standard with 3/4" test port on cap.

JCM 100 Series Repair Sleeves are ANSI/NSF Standard 61, Standard 61 Annex G & ANSI/NSF 372 Certified.



This typical specification, provided by JCM Industries, is a proposed guideline for use by specifying agencies to ensure significant design and material features of this product are included within the agencies' individual specifications.



JCM INDUSTRIES

P. O. Box 1220, Nash, TX 75569-1220

Phone 800-527-8482 or 903-832-2581

Fax 800-874-9524 or 903-838-6260

www.jcmindustries.com

Material Specifications

JCM 159 Abandoned Corporation Stop Cap Sleeve Type 1

Body: Stainless Steel, 18-8 Type 304

Bolts: Stainless Steel, 18-8 Type 304

Cap Extension: Schedule 10 Stainless Steel Pipe

Test Port: Stainless Steel, 18-8 Type 304

Gasket: Full circumferential Virgin Styrene-Butadiene Rubber (SBR) - Compounded for use with water, salt solutions, mild acids and bases. Per ASTM D-2000 M4AA 607. Standard temperature range from -40° to 150°F (-40° to 65°C) constant, maximum intermittent 180° F (82°C).

Optional Gasket: EPDM available upon request.

For applications on high temperatures or chemical pipelines, contact JCM Industries Technical Services.

