



JCM Industries, Inc.

**Fittings & Fabrications
for Repair - Connection - Branching
All Types and Sizes of Pipe**

JCM Industries, Inc.
P.O. Box 1220 - Nash, TX 75569-1220
Office: 903-832-2581, Fax: 903-838-6260
www.jcmindustries.com

Call Toll Free: 800-527-8482
Fax Toll Free: 800-874-9524
Email: sales@jcmindustries.com

JCM 131 ALL STAINLESS STEEL UNIVERSAL CLAMP COUPLINGS JCM 6131 All 316 STAINLESS STEEL UNIVERSAL CLAMP COUPLINGS

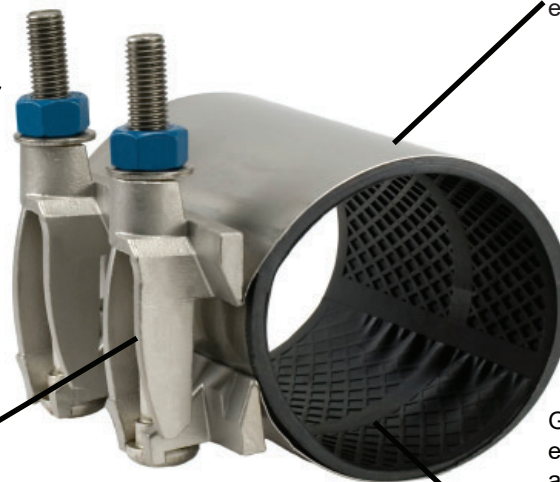
Single Band, Stainless Steel Lugs

Bolts: 18-8 Type 304 Stainless Steel available. Drop-in bolts means no loose parts.

Meets ANSI/AWWA C230 Stainless-Steel Full- Encirclement Repair and Service Connection Clamps.

Low profile Stainless Steel lugs with mutually supporting sliding fingers provide distortion free tightening over wide range.

Positive attachment of band to lugs eliminates mechanical weaknesses.



Type 304 Stainless Steel band conforms to pipe irregularities maintaining sealing pressure for entire gasket.

Gridded gasket with long tapered ends and recessed bridge plate assures even gasket pressure throughout range - without wrinkling or crimping. Compounded for use with water, salt solutions, mild acids and bases.

Image Reflects 6" Clamp Width

JCM ALL STAINLESS STEEL Universal Clamp Couplings meet all Three R's

Robust, Reliable and Ready!

JCM Universal Clamp Couplings Selection

JCM Universal Clamp Couplings provide a full circumferential seal and wide range for the permanent repair or reconnection of Asbestos-Cement, Cast Iron, Ductile Iron, PVC, Steel, HDPE and other types of pipe.

Industry standard repair clamps require bolt torque ranges between 60 - 85 ft. lbs. of torque. Some manufacturers advise not to exceed 75 ft. lbs. of torque due to excessive lug deformation. Difficult installations involving pipe offset or deflection often require more torque to assure proper clamp conformation to the pipe and high gasket compression. Larger pipe sizes and pipelines with higher working pressures also require greater torque capability. JCM Universal Clamp Couplings have bolt torque capability in excess of 100 ft. lbs. on 5/8" bolts and 150 ft. lbs. on 3/4" bolts. These elevated torque value capabilities allow JCM Universal Clamp Couplings to go beyond the "standard installation".

As an added PLUS, JCM Universal Clamp Couplings come standard with a thicker gasket in all but the smallest sizes. This heavy 1/4" thick gasket was introduced to the industry to provide for better performance on heavily damaged and pitted pipe. However, it had been available in only 10" and 12" clamp sizes. In JCM clamps this heavier gasket is standard in all sizes 3" and larger. Combined with the **greater bolt torque capability**, the heavy gasket feature means more clamp capability under extreme conditions.

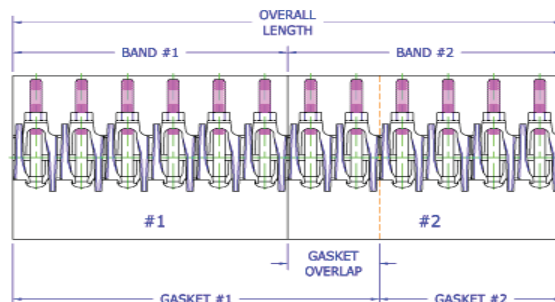
Width Selection - 131, 132, 6131, 6132 All Stainless Steel Universal Clamp Couplings

JCM Universal Clamp Couplings are available in a great many widths. Because these clamps utilize a heavier gasket and bolting arrangement than most comparable clamps, when you use JCM Universal Clamp Couplings significant savings are possible. The following general recommendations are offered to assist you in taking advantage of the design benefits of these clamps. Specific circumstance may require widths other than these general recommendations.

- 6" Width:** Best and most economical width to repair most beam breaks and to connect pipe in sizes 4" and smaller. Short length with thicker gasket give outstanding deflection capability. Recommend 2" of gasket on both sides of the break.
- 7-1/2" Width:** Best for Asbestos Cement coupling replacements, beam breaks and connection of pipe in sizes 6" and larger.
- 12" Width:** Best for longer breaks, repairs on working pressure above 150 PSI and for larger sizes of pipe.
- 15, 18, 24, 30" and longer widths:** Best for long splits and heavily damaged pipe. For best performance the separation between pipe ends should be no more than 1/4". If the space is larger, or a large hole is being repaired, use a sheet of stainless steel over the hole under the gasket or a spacer to fill gap between pipe ends.

JCM Multi-Segment Clamps for Extended Width Clamps

JCM clamps with widths greater than 48" are often provided as multi-segmented clamps which install in an overlapping band/gasket design. The gasket in the first section extends out from the band. The next section clamp has the gasket offset in the clamp, the second band butts up to the first band and covers the extended gasket and the additional sections continue with the offset assembly. The last band segment has a gasket flush with the stainless band, providing the last segment of the clamp. This overlapping band design allows for nearly unlimited clamp widths, ensures safe, damage free transport on common carriers and hot shot service, eases installation for a small number of crew members, provides for direct tightening of bolt sections over the gasket.



JCM 131 All Stainless Steel Universal Clamp Couplings

JCM 6131 All 316 Stainless Steel Universal Clamp Coupling

JCM Single Band All Stainless Steel Clamp Coupling with larger bolts and heavier lug - especially for piping systems that are exposed to hot soils or corrosive environments. JCM All Stainless Steel Clamps provide the corrosion resistance of all stainless to this means of repairing and connecting pipe.



NOM PIPE SIZE (IN)	CLAMP O.D. RANGE (IN)	131 STAINLESS STEEL UNIVERSAL CLAMP CLAMP NUMBER	Clamp Width - Approximate Weight						
			6"	7"	12"	15"	18"	24"	30"
			Lbs.#	Lbs.#	Lbs.#	Lbs.#	Lbs.#	Lbs.#	Lbs.#
1-1/2	1.88 - 2.15	0190	.		.				
			5#		10#				
2 - 2-1/2	2.35 - 2.63 2.70 - 3.13	0238 0275			
			5#	6#	10#	12#			
3	3.46 - 3.70 3.73 - 4.13	0350 0400			
			6#	7#	11#	13#			
4	4.45 - 4.75 4.74 - 5.14 4.95 - 5.35 5.22 - 5.62	0450 0480 0500 0525
			6#	7#	12#	14#	18#	24#	28#
		
			7#	8#	13#	16#	21#	26#	31#
8	7.95 - 8.35 8.54 - 8.94 8.99 - 9.39 9.27 - 9.67 9.90 - 10.30	0800 0863 0905 0940 1000
			8#	9#	15#	19#	24#	30#	38#
		
		
			15#	26#	31#	39#	42#	60#	
12*	12.60 - 13.02 13.10 - 13.50 13.40 - 13.80 13.70 - 14.10 14.00 - 14.40	1275 1320 1340 1370 1400
			
			17#	28#	34#	42#	56#	68#	
			
			
Number of Bolts			2	2	4	4	6	8	10

*7" & 15" widths use 5/8" bolts

HOW TO ORDER

1. Determine O.D. of pipe.
2. Select proper clamp O.D. range and width.
3. Determine Model Number. Model 131 for standard clamp. Model 6131 for all 316 stainless steel
4. Specify clamp number.

Example: To fit Cast Iron pipe, 6.90 O.D. with 6" width, order: 131-0690-6

For All 316 stainless steel, order: 6131-0690-6

Note: Clamps do not prevent lateral movement of pipe. Applications in which the pipe may move out of the clamp, proper anchorage of the pipe must be provided.

Available Options Upon Request Models 131-132

- Pipe sizes and ranges not listed
- Conductive Buttons
- Specialty Gaskets
- Tapped Outlets
- Other Sizes and Ranges

Meets ANSI/AWWA C230 Stainless-Steel Full-Encirclement Repair and Service Connection Clamps as applicable. JCM 100 Series Universal Clamp Couplings are ANSI/NSF Standard 61, Annex G and ANSI/NSF 372 Certified.



JCM 131 All Stainless Steel Universal Clamp Couplings

JCM 6131 All 316 Stainless Steel Universal Clamp Couplings



**JCM 131 All Stainless Steel
Universal Clamp Coupling**



**JCM 133 All Stainless Steel Tapped Outlet
Universal Clamp Coupling**

JCM All Stainless Steel Universal Clamp Couplings - Models 131, 132, 133, 134

Band: 18-8 Type 304 Certifiable Prime Stainless Steel. Optional 316 material available.

Lugs: CF8 Cast Stainless Steel (equivalent to 304 Stainless Steel). Optional 316 material available.

Bolts: Stainless Steel 18-8 Type 304 or 316 available.

Gasket: Virgin Styrene-Butadiene Rubber (SBR) - Compounded for use with water, salt solutions, mild acids and bases. Per ASTM D-2000 M4AA 607. Standard temperature range from -40° to 150° F (-40° to 65° C) constant, maximum intermittent 180°F (82°C). For applications on high temperatures or chemical pipelines, contact JCM Industries Technical Services.

Pressure Rating: Pressure holding capabilities vary according to application.
For specific pressure ratings, contact JCM Industries Technical Services.

Meets ANSI/AWWA C230 Stainless-Steel Full-Encirclement Repair and Service Connection Clamps as applicable.
JCM 100 Series Universal Clamp Couplings are ANSI/NSF Standard 61, Annex G and ANSI/NSF 372 Certified.



JCM Industries, Inc.
P.O. Box 1220
Nash, TX 75569-1220
www.jcmindustries.com

JCM131UCC-07292021